

## PRODUCT FEATURES

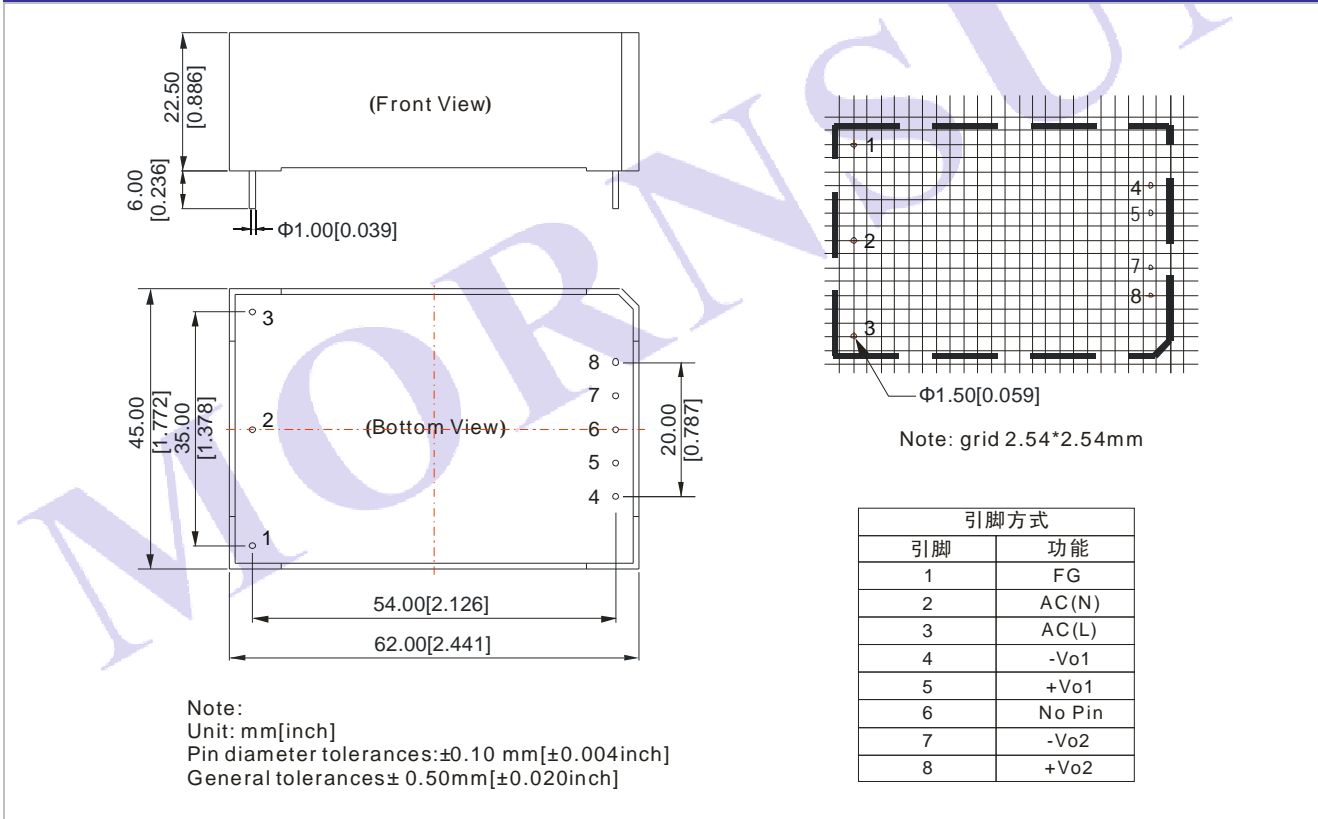
1. Universal Input :85 ~ 240VAC,50/60Hz
2. Low Ripple and Noise
3. AC and DC all in one (input from the same terminal)
4. Overload protection and short circuit protection
5. High efficiency, High power density
6. Low loss, green power
7. Multiple models available
8. industrial level specifications
9. 3 years warranty



## PRODUCT PROGRAM

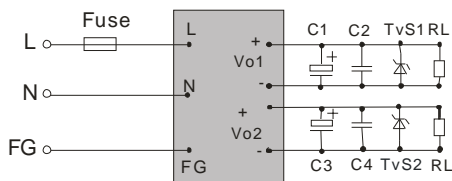
Model	Package	Input Voltage (AC)	Vo1	Vo 2	Ripple and Noise (Typ.)	Efficiency (%) (Typ.)
LH15-10D1205-04	62X45X22.5mm	100~240V	12V/1A	5V/0.4A	50mV	78%

## OUTLINE AND DIMENSIONS



## TYPICAL APPLICATIONS

Isolated and Separated Twin Output



## EXTERNAL CIRCUIT TYPICAL VALUE

Vout	C1/C3	C2/C4	FUSE	TVS
5V	330uF/10V	0.1uF/50V (ceramic capacitor)	2A/250V	P6KE6.8A
12V	120uF/25V			P6KE20A

Note:

Output filtering capacitor C5, C3 and C1 are electrolytic capacitor. It is recommended to use high frequency and low resistance electrolytic capacitor. For capacitance and current of the capacitor please refer to suppliers' specifications. Voltage derating of capacitor should be 80% or above. C2, C4 and C6 eliminate high frequency noise. TVS is a recommended component to protect post-circuits (if converter fails).

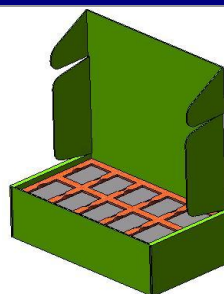
INPUT SPECIFICATIONS		
Input voltage range	100~240VAC(85~264VAC) 140~340VDC(120~370VDC)	
Input frequency	47~63Hz	
External input fuse	2A/250V slow blow	
Input current	110VAC 250mA typ	230VAC 140mA, typ
Surge current	110VAC 10A, typ	230VAC 20A, typ

OUTPUT SPECIFICATIONS		
Voltage set accuracy		±2%(main output)
Input variation		±0.5%
Load variation (balanced load)	Isolated and separated twin output	Vo1 ±3% (Main output) Vo2 ±5% (Supplement output)
Ripple & noise(p-p)	(20MHz Bandwidth)	50mV (typ) 100mV(max)
Short circuit protection		Continuous, and auto resume
Over current protection		≥115%lo

COMMON SPECIFICATIONS	
Temperature ranges	--- Operating : -40°C~+70°C --- Power derating (above 50°C) 3.75% / °C --- Storage: -40°C~+105°C --- Case temperature: +90°C max
Hold-up time	120ms(typ) / at Vin:230VAC(Full load)
Humidity	85%(max)
Temperature coefficient	0.02% / °C
Switching frequency	60KHz
I/O-isolation voltage	3000VAC/1Min
Output isolation	1000VDC/1MIN
Leakage current	0.3mA RMS typ./230VAC/50Hz
Case material	UL94V-0
Install	PCB
MTBF	>300,000h @25°C

## PACKAGE DIAGRAM

LH15-10D1205-04



Inner packaging box dimensions: L\*W\*H=355\*192\*93mm  
 Outer packaging box dimensions: L\*W\*H=405\*380\*305mm

Package quantity: 20pcs  
 Package quantity: 120pcs

### **MORNSUN Science & Technology Co.,Ltd.**

Address: No. 5, Kehui St. 1, Kehui development center, Science Ave., Guangzhou Science City, Luogang district, Guangzhou, P.R.China.

Tel: 86-20-38601850

Fax:86-20-38601272

[Http://www.mornsun-power.com](http://www.mornsun-power.com)