

15W, DIY AC/DC converter



FEATURES

- Ultra-wide 85 - 305VAC and 100 - 430VDC input voltage range
- Accepts AC or DC input (dual-use of same terminal)
- Operating ambient temperature range: -40°C to +85°C
- High I/O isolation test voltage up to 4000VAC
- Multi application, compact size, flexible layout
- Output short circuit, over-current protection
- Plastic case meets UL94V-0 flammability
- Pollution degree 3 (meet IEC62368-1)

LS15-23BxxDR3-C series is one of Mornsun's miniaturized potting highly efficient green power AC-DC Converters. They feature wide input range accepting either AC or DC voltage, high reliability, low power consumption, reinforced isolation and strong applicability. All models are particularly suitable for industrial control, electric power, instrumentation and smart home applications which have high requirement for dimension and don't have high requirement on EMC. For extremely harsh EMC environment, we recommend using the application circuit show in Design Reference of this datasheet.

Selection Guide

| Certification | Part No. | Output Power | Nominal Output Voltage and Current (Vo/Io) | Efficiency at 230VAC (%) Typ. | Capacitive Load (uF) Max. |
|---------------|-----------------|--------------|--|-------------------------------|---------------------------|
| -- | LS15-23B12DR3-C | 15W | 12V/1250mA | 84 | 4000 |
| | LS15-23B15DR3-C | | 15V/1000mA | 84 | 1500 |
| | LS15-23B24DR3-C | | 24V/625mA | 84 | 680 |

Note: The nominal output voltage refers to the voltage applied to the load terminal after adding external circuits.

Input Specifications

| Item | Operating Conditions | Min. | Typ. | Max. | Unit |
|---------------------------------|----------------------|---|------|------|------|
| Input Voltage Range | AC input | 85 | -- | 305 | VAC |
| | DC input | 100 | -- | 430 | VDC |
| Input Frequency | | 47 | -- | 63 | Hz |
| Input Current | 115VAC | -- | -- | 0.4 | A |
| | 230VAC | -- | -- | 0.25 | |
| Inrush Current | 115VAC | -- | 20 | -- | |
| | 230VAC | -- | 35 | -- | |
| Leakage Current | 277VAC | 0.25mA RMS Max. | | | |
| Recommended External Input Fuse | | 1A, slow-blow, required (The actual use needs to be selected according to the application environment) | | | |
| Hot Plug | | Unavailable | | | |

Output Specifications

| Item | Operating Conditions | Min. | Typ. | Max. | Unit |
|----------------------------|--|----------------------------------|-------|------|------|
| Output Voltage Accuracy | 10% - 100% load | -- | ±5 | -- | % |
| Line Regulation | Rated load | -- | ±1.5 | -- | |
| Load Regulation | 10% - 100% load | -- | ±3 | -- | |
| Minimum Load | | 10 | -- | -- | |
| Ripple & Noise* | 20MHz bandwidth (peak-to-peak value), 10% - 100% load | -- | 80 | 150 | mV |
| Temperature Coefficient | | -- | ±0.15 | -- | %/°C |
| Stand-by Power Consumption | 230VAC | -- | 0.10 | 0.25 | W |
| Short Circuit Protection | | Hiccup, continuous, self-recover | | | |
| Over-current Protection | | ≥ 110%Io, self-recover | | | |

| | | | | | |
|--|--------------|----|----|----|----|
| Hold-up Time | 115VAC input | -- | 8 | -- | ms |
| | 230VAC input | -- | 40 | -- | |
| Note: 1. * The "parallel cable" method is used for ripple and noise test, please refer to AC-DC Converter Application Notes for specific information; 2. The product is able to work with 0% - 10% load and with stable output. | | | | | |

General Specifications

| Item | Operating Conditions | Min. | Typ. | Max. | Unit |
|-----------------------|---|---|------|------|------|
| Isolation | Input-output Electric Strength Test for 1min., leakage current <5mA | 4000 | -- | -- | VAC |
| Insulation Resistance | Input-output At 500VDC | 100 | -- | -- | MΩ |
| Operating Temperature | | -40 | -- | +85 | °C |
| Storage Temperature | | -40 | -- | +105 | |
| Storage Humidity | | -- | -- | 95 | |
| Soldering Temperature | Wave-soldering | 260 ± 5°C; time: 5 - 10s | | | |
| | Manual-welding | 360 ± 10°C; time: 3 - 5s | | | |
| Power Derating | +50°C to +85°C | 1.71 | -- | -- | %/°C |
| | 85VAC - 100VAC | 2 | -- | -- | %VAC |
| | 277VAC - 305VAC | 0.72 | -- | -- | |
| Safety Standard | | Design refer to IEC/EN62368-1, IEC/EN60335-1, IEC/EN61558-1 | | | |
| Safety Class | | CLASS II | | | |
| MTBF | MIL-HDBK-217F@25°C | ≥ 1,000,000 h | | | |

Mechanical Specifications

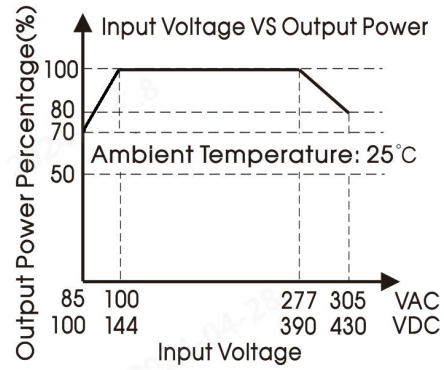
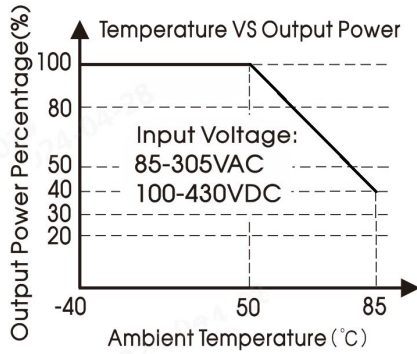
| | |
|----------------|---|
| Case Material | Black plastic, flame-retardant and heat-resistant (UL94V-0) |
| Dimension | 33.34 x 21.50 x 9.72mm |
| Weight | 14g (Typ.) |
| Cooling method | Free air convection |

Electromagnetic Compatibility (EMC)

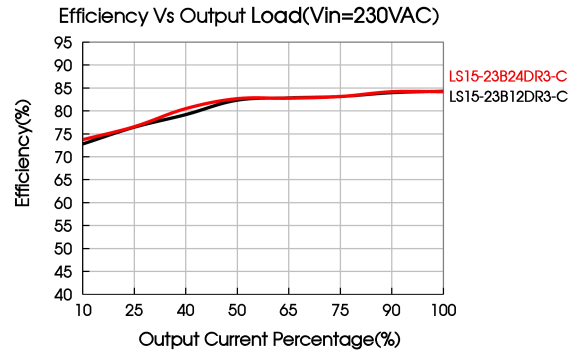
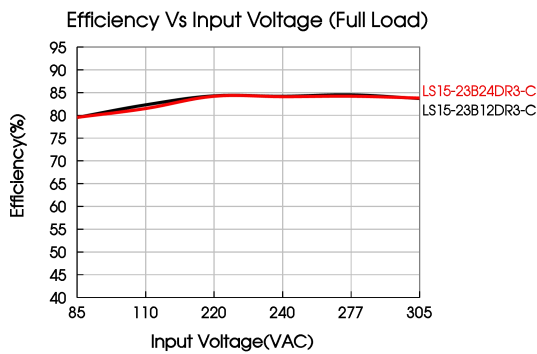
| | | | | |
|-----------------------|----------------------------|-------------------------------|--|------------------|
| Emissions | CE | CISPR32/EN55032 | CLASS A (Application circuit 1, 4) | |
| | | CISPR32/EN55032 | CLASS B (Application circuit 2, 3, 5) | |
| | RE | CISPR32/EN55032 | CLASS A (Application circuit 1, 4) | |
| | | CISPR32/EN55032 | CLASS B (Application circuit 2, 3, 5) | |
| Immunity | ESD | IEC/EN61000-4-2 | Contact ±6KV /Air ±8KV | perf. Criteria A |
| | RS | IEC/EN61000-4-3 | 10V/m | perf. Criteria A |
| | EFT | IEC/EN61000-4-4 | ±2KV (Application circuit 1, 2) | perf. Criteria B |
| | | IEC/EN61000-4-4 | ±4KV (Application circuit 3, 4, 5) | perf. Criteria B |
| | Surge | IEC/EN61000-4-5 | line to line ±1KV (Application circuit 1, 2) | perf. Criteria A |
| | | IEC/EN61000-4-5 | line to line ±2KV (Application circuit 3, 4) | perf. Criteria A |
| | | IEC/EN61000-4-5 | line to line ±2KV/line to PE ±4KV (Application circuit 5) | perf. Criteria A |
| | CS | IEC/EN61000-4-6 | 10Vr.m.s | perf. Criteria A |
| | Voltage variation* | IEC61000-6-2/IEC61000-4-11 | 70% Un, 25/30 cycle(50/60Hz) 40% Un, 10/12 cycle(50/60Hz) 0% Un, 1 cycle | perf. Criteria B |
| voltage interruption* | IEC61000-6-2/IEC61000-4-11 | 0% Un, 250/300 cycle(50/60Hz) | perf. Criteria C | |

Note: *Un is the maximum input nominal voltage.

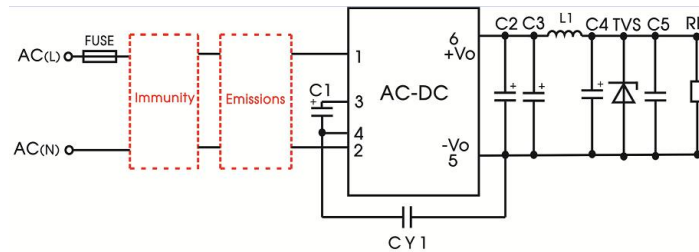
Product Characteristic Curve



Note: ① With an AC input between 85-120VAC/277-305VAC and a DC input between 100-170VDC/390-430VDC, the output power must be derated as per temperature derating curves;
② This product is suitable for applications using natural air cooling; for applications in closed environment please consult Mornsun FAE.



Additional Circuits Design Reference



LS series additional circuits design reference

LS15 series additional components selection guide (No EMC devices)

| Part No. | C1 (required) | C2 (required) | C3 (required) | L1 (required) | C4 (required) | C5 | CY1 (required) | TVS |
|-----------------|---|--------------------------------------|---------------|------------------------|---------------|---------------|---|---------|
| LS15-23B12DR3-C | 33uF/450V (-25°C to +85°C, 85-305VAC input; | 470uF/16V (solid-state capacitor) | / | 2.0uH/15mΩ Max/6.5A | 220uF/16V | 0.1uF/ 50V | 1nF/ 400VAC (2.2nF for 5V/9V in application circuit 3/5) | SMBJ20A |
| LS15-23B15DR3-C | -40°C to +85°C, 165-305VAC input) | 470uF/25V | 470uF/25V | | 220uF/25V | | | |
| LS15-23B24DR3-C | 47uF/450V (-40°C to +85°C, 85-305VAC input) | 470uF/35V | / | | 100uF/35V | | | |

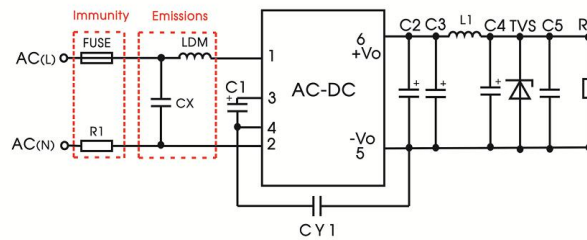
Note:
1. C1 is used as filter capacitor with AC input (must be connected externally) and as EMC filter capacitor with DC input (must be connected), and it is recommended to use the capacitor with ripple current >400mA@100KHz.
2. We recommend using an electrolytic capacitor with high frequency and low ESR rating for C4 (refer to manufacture's datasheet), electrolytic capacitor can be used for C2, C3 when applied in normal and high temperature environments. Combined with C2, C3, L1, they form a pi-type filter circuit. Choose a capacitor voltage rating with at least 20% margin, in other words not exceeding 80%. C5 is a ceramic capacitor, used for filtering high frequency noise.
3. A suppressor diode (TVS) is recommended to protect the application in case of converter failure and specification should be 1.2 times of the output voltage.
4. LDM (1.2mH, P/N: 12050314); L1 (2.0uH, P/N: 12050419) Mornsun quotation is available.

Environmental Application EMC Solution

| Recommended circuit | Application environmental | Typical industry | Input voltage range | Environment temperature | Emissions | Immunity |
|---------------------|-------------------------------|---|---------------------|-------------------------|-----------|----------|
| 1 | Basic application | None | 85 - 305VAC | -40°C to +85°C | Class A | Level 3 |
| 2 | Indoor civil environment | Smart home/Home appliances (2Y) | | -25°C to +55°C | Class B | Level 3 |
| | Indoor general environment | Intelligent building/Intelligent agriculture | | -25°C to +55°C | Class B | Level 4 |
| 3 | Indoor industrial environment | Manufacturing workshop | | -40°C to +85°C | Class A | Level 4 |
| 4 | Outdoor general environment | ITS/Video monitoring/Charging point/Communication/Security and protection | | -40°C to +85°C | Class B | Level 4 |

Electromagnetic Compatibility Solution—Recommended Circuit

1. Application circuit 1—Basic application



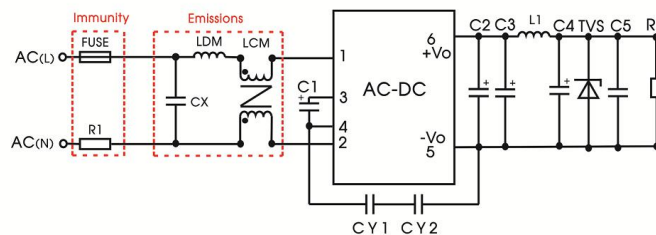
Application circuit 1

| Application environmental | Ambient temperature range | Immunity level | Emissions class |
|---------------------------|---------------------------|----------------|-----------------|
| Basic application | -40°C to +85°C | Level 3 | Class A |

| Component | Recommended value |
|-----------|--|
| FUSE | 1A/300V, slow-blow, required |
| R1 | 6.8Ω /3W (wire-wound resistor, required) |
| CX | 0.1uF/310VAC |
| LDM | 1.2mH/Max: 2.5Ω /Min: 0.4A |

Note 1: R1 is the input plug-in resistor, this resistor needs to be a wire-wound resistor (required), please do not select SMD resistors or carbon film resistor.
 Note 2: According to the certification requirements, the X capacitor needs to be connected in parallel with the bleeder resistance, the recommended resistance value is less than 3.8MΩ, and the actual need to be selected according to the certification standard.

2. Application circuit 2—Universal system recommended circuits for indoor civil /general environment



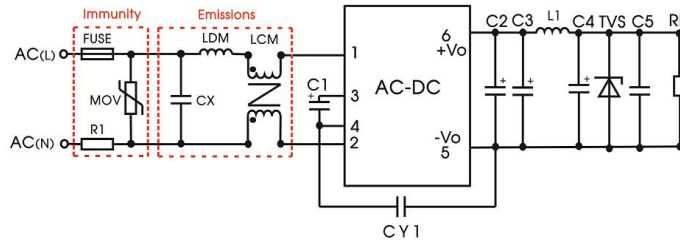
Application circuit 2

| Application environmental | Ambient temperature range | Immunity level | Emissions class |
|---------------------------|---------------------------|----------------|-----------------|
| Indoor civil /general | -25°C to +55°C | Level 3 | Class B |

| Component | Recommended value |
|-----------|--|
| FUSE | 1A/300V, slow-blow, required |
| R1 | 6.8Ω /3W (wire-wound resistor, required) |
| CX | 0.2uF/310VAC |
| LDM | 1.2mH/Max: 2.5Ω /Min: 0.4A |
| LCM | 12.6mH/Min: 0.4A |

Note 1: In the home appliance application environment, the two Y capacitors of the primary and secondary need to be externally connected (CY1/CY2, value at 2.2nF/250VAC), which can meet the EN60335 certification.
 Note 2: According to the certification requirements, the X capacitor needs to be connected in parallel with the bleeder resistance, the recommended resistance value is less than 2.5MΩ, and the actual need to be selected according to the certification standard.
 Note 3: R1 is the input plug-in resistor, this resistor needs to be a wire-wound resistor (required), please do not select SMD resistors or carbon film resistor.

3. Application circuit 3—Universal system recommended circuits for indoor industrial environment



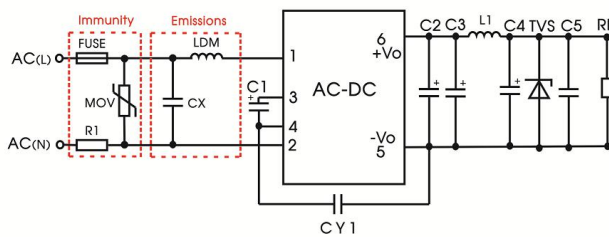
Application circuit 3

| Application environmental | Ambient temperature range | Immunity level | Emissions class |
|---------------------------|---------------------------|----------------|-----------------|
| Indoor industrial | -25℃ to +55℃ | Level 4 | Class B |

| Component | Recommended value |
|-----------|--|
| FUSE | 2A/300V, slow-blow, required |
| R1 | 6.8Ω /3W (wire-wound resistor, required) |
| MOV | S14K350 |
| CX | 0.2uF/310VAC |
| LDM | 1.2mH/Max: 2.5Ω /Min: 0.4A |
| LCM | 12.6mH/Min: 0.4A |

Note 1: R1 is the input plug-in resistor, this resistor needs to be a wire-wound resistor (required), please do not select SMD resistors or carbon film resistor.
 Note 2: According to the certification requirements, the X capacitor needs to be connected in parallel with the bleeder resistance, the recommended resistance value is less than 2.5MΩ, and the actual need to be selected according to the certification standard.

4. Application circuit 4—Universal system recommended circuits for outdoor general environment



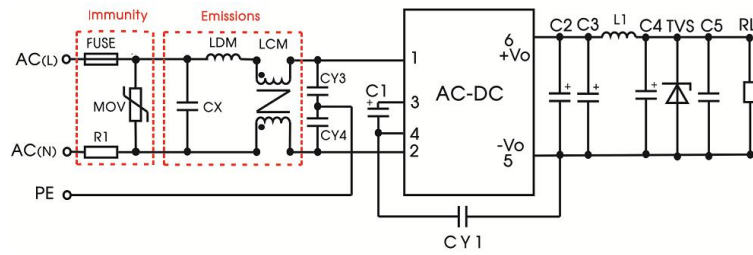
Application circuit 4

| Application environmental | Ambient temperature range | Immunity level | Emissions class |
|-----------------------------|---------------------------|----------------|-----------------|
| Outdoor general environment | -40℃ to +85℃ | Level 4 | Class A |

| Component | Recommended value |
|-----------|--|
| FUSE | 2A/300V, slow-blow, required |
| R1 | 6.8Ω /3W (wire-wound resistor, required) |
| MOV | S14K350 |
| CX | 0.1uF/310VAC |
| LDM | 1.2mH/Max: 2.5Ω /Min: 0.4A |

Note 1: R1 is the input plug-in resistor, this resistor needs to be a wire-wound resistor (required), please do not select SMD resistors or carbon film resistor.
 Note 2: According to the certification requirements, the X capacitor needs to be connected in parallel with the bleeder resistance, the recommended resistance value is less than 3.8MΩ, and the actual need to be selected according to the certification standard.

5. Application circuit 5—Universal system recommended circuits for outdoor industrial environment



Application circuit 5

| | | | |
|--------------------------------|---------------------------|----------------|-----------------|
| Application environmental | Ambient temperature range | Immunity level | Emissions class |
| Outdoor industrial environment | -40°C to +85°C | Level 4 | Class B |

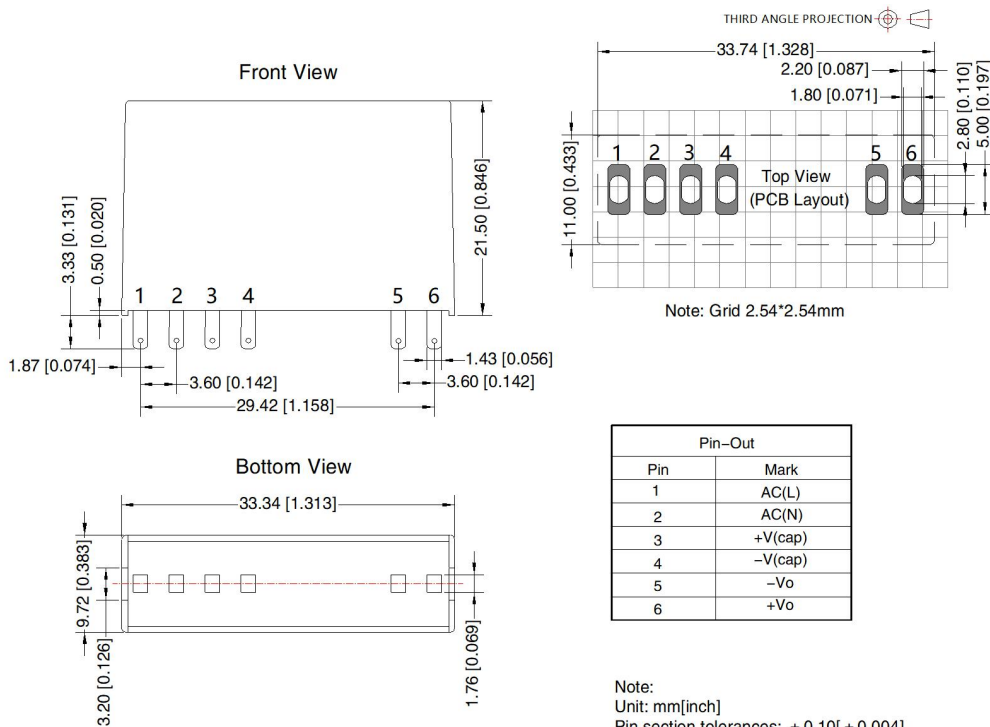
| Component | Recommended value |
|-----------|---|
| FUSE | 2A/300V, slow-blow, required |
| R1 | 6.8 Ω /3W (wire-wound resistor, required) |
| MOV | S14K350 |
| CX | 0.2uF/310VAC |
| LDM | 1.2mH/Max: 2.5 Ω /Min: 0.4A |
| LCM | 12.6mH/Min: 0.4A |
| CY3/CY4 | 1nF/400VAC |

Note 1: R1 is the input plug-in resistor, this resistor needs to be a wire-wound resistor (required), please do not select SMD resistors or carbon film resistor.
Note 2: According to the certification requirements, the X capacitor needs to be connected in parallel with the bleeder resistance, the recommended resistance value is less than 2.5MΩ, and the actual need to be selected according to the certification standard.

6. For additional information please refer to application notes on www.mornsun-power.com.

Dimensions and Recommended Layout

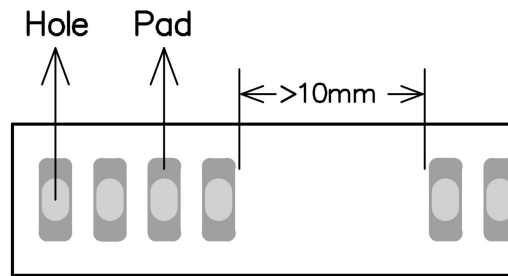
LS15-23BxxDR3-C series dimensions



| Pin-Out | |
|---------|---------|
| Pin | Mark |
| 1 | AC(L) |
| 2 | AC(N) |
| 3 | +V(cap) |
| 4 | -V(cap) |
| 5 | -Vo |
| 6 | +Vo |

Note:
Unit: mm[inch]
Pin section tolerances: ± 0.10[± 0.004]
General tolerances: ± 0.50[± 0.020]

LS15-23BxxDR3-C series recommended pad



Note: Please refer to the recommended dimensions or pad.

Note:

1. For additional information on Product Packaging please refer to www.mornsun-power.com. Packaging bag number: 58220505;
2. External electrolytic capacitors are required to modules, more details refer to typical applications;
3. This series is a potting product, at least 6.4mm creepage distance between the primary and secondary external components of the module is needed to meet the safety requirement, refer to the recommended welding hole design in the external dimension drawing;
4. Unless otherwise specified, parameters in this datasheet were measured under the conditions of $T_a=25^{\circ}\text{C}$, humidity<75%, nominal input voltage (115V and 230V) and rated output load;
5. All index testing methods in this datasheet are based on our company corporate standards;
6. We can provide product customization service, please contact our technicians directly for specific information;
7. Products are related to laws and regulations: see "Features" and "EMC";
8. Our products shall be classified according to ISO14001 and related environmental laws and regulations, and shall be handled by qualified units.

Mornsun Guangzhou Science & Technology Co., Ltd.

Address: No. 5, Kehui St. 1, Kehui Development Center, Science Ave., Guangzhou Science City, Huangpu District, Guangzhou, P. R. China
Tel: 86-20-38601850 Fax: 86-20-38601272 E-mail: info@mornsun.cn www.mornsun-power.com