



RoHS



FEATURES

- Universal 90 - 264VAC or 120 - 373VDC Input voltage
- Operating ambient temperature range: -30°C to +70°C
- High efficiency, high reliability, long service life
- LED indicator for power on
- Output short circuit, over-current, over-voltage protection
- Withstand 300VAC surge input for 5s
- High I/O isolation test voltage up to 3000VAC
- Safety according to IEC/EN/UL62368, EN60335, GB4943
- Emissions compliant to CISPR32/EN55032 CLASS B
- Withstand 5G vibration test
- Operating altitude up to 5000m

LM75-10D0512-40 is a 12V/4A & 5V/4A (dual isolation/output) customized power supply, 75W, low-cost, used in the elevator industry, industrial control equipment and instrumentation applications. The products can be used in harsh working environments with an ambient temperature range from -30°C to +70°C, without the need of a fan for further heat dissipation. In addition, the converters EMC immunity performance meets the requirements of IEC61000 standard and meet emission standard CISPR32/EN55032, CLASS B without any external components, thus providing excellent EMC protection. The products also meet IEC/EN/UL62368, EN60335, GB4943 safety standards. The converters integrate a variety of protection features and offer a high-performance to cost-effective providing the best power solution for a variety of industries such as industrial control equipment, instrumentation and smart home and building equipment application.

Selection Guide

Part No.	Output Power (W)	Nominal Output Voltage and Current (Vo/Io)		Working Current Range*		Efficiency at 230VAC (%) Typ.	Max. Capacitive Load (μF)	
		Vo1/Io1	Vo2/Io2	Io1	Io2		Vo1	Vo2
LM75-10D0512-40	68	+5V/4.0A	+12V/4.0A	0.4-4.0A	0.4-4.0A	82	7000	3000

Note: *Working current range: If any one of the 2 outputs arrive at the maximum current, the total output power cannot exceed the rated power and working time < 3s.

Input Specifications

Item	Operating Conditions	Min.	Typ.	Max.	Unit
Input Voltage Range	AC input	90	--	264	VAC
	DC input	120	--	373	VDC
Input Frequency		47	--	63	Hz
Input Current	115VAC	--	--	1.7	A
	230VAC	--	--	0.9	
Inrush Current	115VAC	--	30	--	
	230VAC	--	45	50	
leakage Current	240VAC	<2.0mA			
Hot Plug		Unavailable			

Output Specifications

Item	Operating Conditions	Min.	Typ.	Max.	Unit	
Output Voltage Accuracy	Full load range	Vo1	±2	--		
		Vo2	±8.0	--		
Line Regulation	Full load	Vo1	±0.5	±1.0		%
		Vo2	±1.5	--		
Load Regulation	10% - 100% load (Balanced load)	Vo1	±0.5	--	mV	
		Vo2	±5.0	--		
Ripple & Noise*	20MHz bandwidth (peak-to-peak value)	Vo1	80	--		
		Vo2	120	--		
Temperature Coefficient	Vo1	--	±0.03	--	%/°C	

AC/DC 75W Enclosed Switching Power Supply LM75-10D0512-40

MORNSUN®

Voltage Adjustable Range Vo1*	230VAC, 50%Io	4.75	--	5.50	VDC
Switching Delay Time	Rated input voltage	--	--	3.0	s
Output Voltage Rise Time	115/230VAC	--	--	30	ms
Hold-up Time	115VAC	5	--	--	
	230VAC	30	--	--	
Min. Load		Refer to the working current range			
Short Circuit Protection	Recovery time <5s after the short circuit disappear	Hiccup, continuous, self-recovery			
Over-current Protection	Balanced load	110%≤Io, self-recovery			
Over-voltage Protection		5.75VDC≤Vo1≤6.75VDC (Hiccup)			
Note: 1.*The "Tip and barrel method" is used for ripple and noise test, output parallel 47uF electrolytic capacitor and 0.1uF ceramic capacitor, please refer to Enclosed Switching Power Supply Application Notes for specific information;					
2.*When Vo1 working in the adjustable range, the output power please refer to power derating curve and should not be exceed the rated output power.					

General Specifications

Item	Operating Conditions	Min.	Typ.	Max.	Unit	
Isolation Voltage	Input - output	3000	--	--	VAC	
	Input - ⊕	2000	--	--		
	output - ⊕	500	--	--		
	Output Vo1 - output Vo2	500	--	--	VDC	
Insulation Resistance	Input - output	100	--	--	MΩ	
	Input - ⊕	100	--	--		
	output - ⊕	100	--	--		
Operating Temperature		-30	--	+70	°C	
Storage Temperature		-40	--	+85		
Storage Humidity	Non-condensing	--	--	95	%RH	
Power Derating	Input voltage derating	90VAC - 115VAC	0.8	--	--	%VAC
		115VAC - 264VAC	0	--	--	
	Operating temperature derating	-30°C to +40°C	0	--	--	%°C
		+40°C to +70°C	2.0	--	--	
Safety Standard		Meet IEC/EN/UL62368/EN60335/GB4943				
Safety Class		CLASS I				
MTBF	MIL-HDBK-217F@25°C	>300,000 h				

Physical Specifications

Case Material	Metal (AL1100, SGCC)
Dimension	129.00 x 97.00 x 30.00mm
Weight	310g (Typ.)
Cooling Method	Free air convection

EMC Specifications

Emissions	CE	CISPR32/EN55032 CLASS B		
	RE	CISPR32/EN55032 CLASS B		
	Harmonic current	IEC/EN61000-3-2 CLASS A		
Immunity	ESD	IEC/EN61000-4-2	Contact ±6KV/Air ±8KV	perf. Criteria A
	RS	IEC/EN61000-4-3	10V/m	perf. Criteria A
	EFT	IEC/EN61000-4-4	±2KV	perf. Criteria A
	Surge	IEC/EN 61000-4-5	line to line ±2KV/line to ground ±4KV	perf. Criteria A
	CS	IEC/EN61000-4-6	10 Vr.m.s	perf. Criteria A
	Voltage dips, short interruptions and voltage variations	IEC/EN61000-4-11	0%, 70%	perf. Criteria B

MORNSUN®

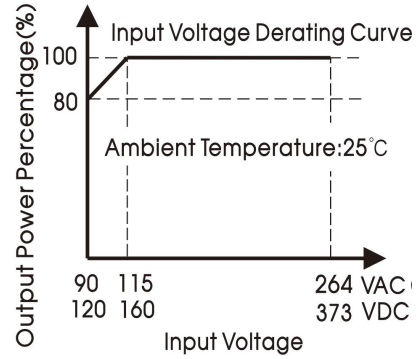
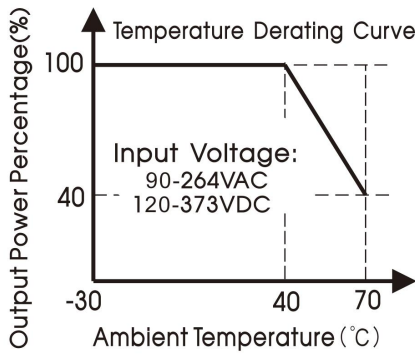
MORNSUN Guangzhou Science & Technology Co., Ltd.

2020.10.22-A/0

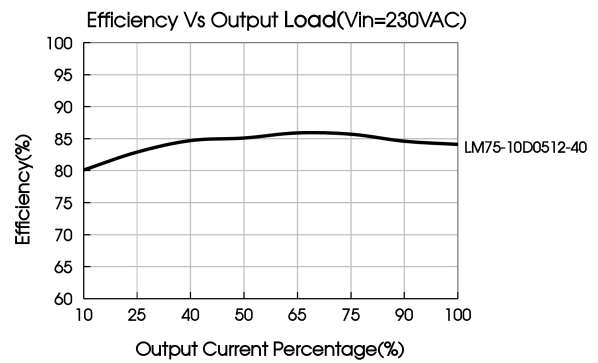
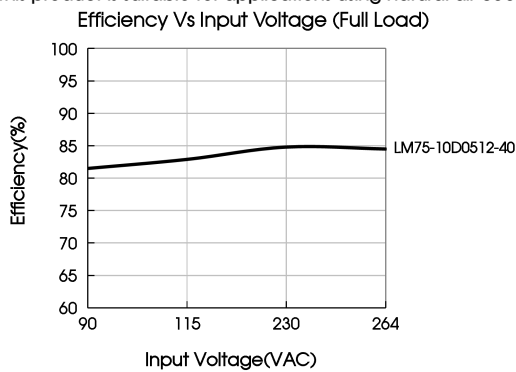
Page 2 of 4

MORNSUN Guangzhou Science & Technology Co., Ltd. reserves the copyright and right of final interpretation

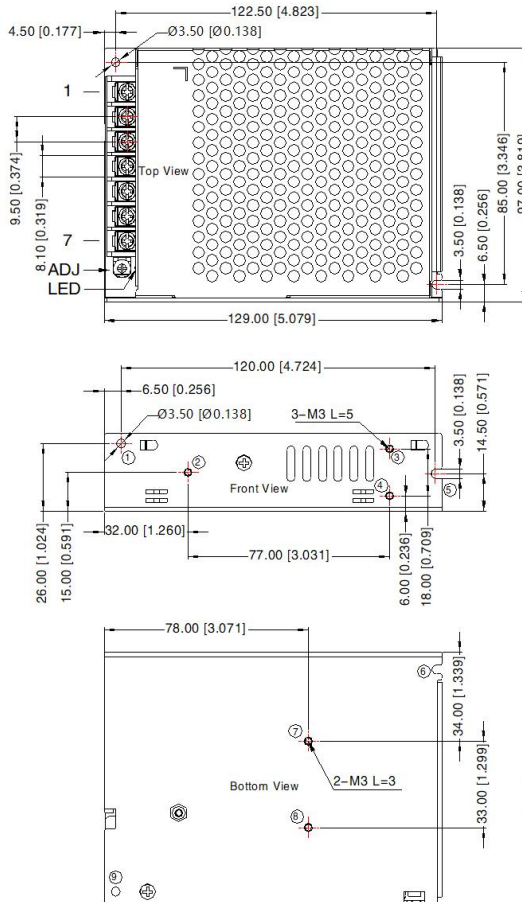
Product Characteristic Curve



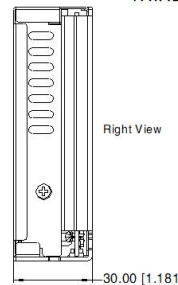
- Note: 1. With an AC input voltage between 90 -115VAC and a DC input between 120-160VDC the output power must be derated as per the temperature derating curves;
2. This product is suitable for applications using natural air cooling; for applications in closed environment please consult Mornsun FAE.



Dimensions and Recommended Layout



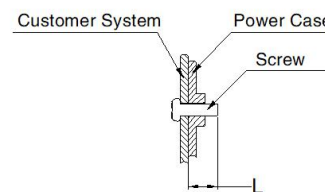
THIRD ANGLE PROJECTION



Pin-Out	
Pin	Mark
1	AC(L)
2	AC(N)
3	⊕
4	-Vo2
5	+Vo2
6	-Vo1
7	+Vo1

① - ⑨ any position must be connected to the earth (⊕)

Position	Screw Spec.	L(max)	Torque(max)
② - ④	M3	5mm	0.4N·m
⑦ - ⑧	M3	3mm	0.4N·m



Note:
 Unit: mm[inch]
 Wire range: 22-12AWG
 Connector tightening torque: M3.5, 0.8N·m
 General tolerances: ± 1.00[± 0.039]

Note:

1. For additional information on Product Packaging please refer to www.mornsun-power.com. Packaging bag number: 58220065;
2. Unless otherwise specified, parameters in this datasheet were measured under the conditions of $T_a=25^{\circ}\text{C}$, humidity<75% RH with nominal input voltage and rated output load;
3. The ambient temperature derating of $5^{\circ}\text{C}/1000\text{m}$ is needed for operating altitude greater than 2000m;
4. All index testing methods in this datasheet are based on our company corporate standards;
5. In order to improve the efficiency at high input voltage, there will be audible noise generated, but it does not affect product performance and reliability;
6. We can provide product customization service, please contact our technicians directly for specific information;
7. Products are related to laws and regulations: see "Features" and "EMC";
8. The out case needs to be connected to PE (\perp) of system when the terminal equipment in operating;
9. Our products shall be classified according to ISO14001 and related environmental laws and regulations, and shall be handled by qualified units;
10. The power supply is considered a component which will be installed into a terminal equipment. All EMC tests should be confirmed with the final equipment. Please consult our FAE for EMC test operation instructions.

Mornsun Guangzhou Science & Technology Co., Ltd.

Address: No. 5, Kehui St. 1, Kehui Development Center, Science Ave., Guangzhou Science City, Huangpu District, Guangzhou, P. R. China
Tel: 86-20-38601850 Fax: 86-20-38601272 E-mail: info@mornsun.cn www.mornsun-power.com