

1W, Fixed input voltage, 5000VAC or 6000VDC isolated & unregulated dual/single output



CE Report  
EN 60601-1

UK Report  
BS EN 60601-1

RoHS

Patent Protection

### FEATURES

- High efficiency up to 83%
- The leakage current < 2μA
- Isolation Capacitance as low as 4pF
- Creepage & Clearance Distance > 5mm
- Reinforced insulation, Isolation voltage: 5000VAC or 6000VDC
- Operating ambient temperature range: -40°C to +105°C
- Continuous short-circuit protection
- Meet IEC60601 standard

G\_S-1WR3 & H\_S-1WR3 series meet reinforced insulation requirements. They are specially designed for applications where require compact size, high isolation, low isolation capacitor and low leakage current power. They are widely used in medical, electricity, IGBT driver and so on. They are suitable for:

1. Where the voltage of the input power supply is stable (voltage variation:  $\pm 10\%V_{in}$ );
2. Where isolation is necessary between input and output (isolation voltage  $\leq 5000VAC$  or  $6000VDC$ );
3. Where do not has high requirement of line regulation and the ripple & noise of the output voltage;  
Such as, medical collection isolation, high voltage collection circuit and IGBT drive circuit.

### Selection Guide

Certification	Part No.	Input Voltage (VDC)	Output		Full Load Efficiency (%) Min./Typ.	Capacitive Load(μF)* Max.
		Nominal (Range)	Voltage (VDC)	Current (mA) Max./Min.		
--	G0503S-1WR3	5 (4.5-5.5)	±3.3	±152/±15	71/75	1000
	G0505S-1WR3		±5	±100/±10	76/80	1000
	G0509S-1WR3		±9	±56/±6	76/80	470
	G0512S-1WR3		±12	±42/±5	77/81	220
	G0515S-1WR3		±15	±34/±4	77/81	220
	H0503S-1WR3		3.3	303/31	71/75	2200
	H0505S-1WR3		5	200/20	76/80	2200
	H0509S-1WR3		9	111/11	76/80	1000
	H0512S-1WR3		12	84/9	77/81	470
	H0515S-1WR3		15	67/7	77/81	470
	H0524S-1WR3		24	42/4	77/81	220
EN/BS EN	G1203S-1WR3	12 (10.8-13.2)	±3.3	±152/±15	73/77	1000
	G1205S-1WR3		±5	±100/±10	75/79	1000
	G1209S-1WR3		±9	±56/±6	75/79	470
	G1212S-1WR3		±12	±42/±5	77/81	200
	G1215S-1WR3		±15	±34/±4	77/81	200
EN/BS EN	G1224S-1WR3	12 (10.8-13.2)	±24	±21/±3	73/77	220
	H1203S-1WR3		3.3	303/31	72/76	2200
	H1205S-1WR3		5	200/20	75/79	2200
	H1209S-1WR3		9	111/12	77/81	680
	H1212S-1WR3		12	84/9	79/83	470
	H1215S-1WR3		15	67/7	79/83	470
EN/BS EN	G1505S-1WR3	15 (13.5-16.5)	±5	±100/±10	73/77	1000
	G1512S-1WR3		±12	±42/±5	75/79	220
	G1515S-1WR3		±15	±33/±4	75/79	220

--	G2403S-1WR3	24 (21.6-26.4)	±3.3	±152/±15	69/73	1000
EN/BS EN	G2405S-1WR3		±5	±100/±10	71/75	1000
	G2409S-1WR3		±9	±56/±6	71/75	470
	G2412S-1WR3		±12	±42/±5	72/76	220
	G2415S-1WR3		±15	±34/±4	72/76	220
	G2424S-1WR3		±24	±21/±3	66/70	220
EN/BS EN	H2405S-1WR3		5	200/20	72/76	2200
	H2409S-1WR3		9	111/12	72/76	680
	H2412S-1WR3		12	84/9	72/76	470
	H2415S-1WR3		15	67/7	72/76	470
	H2424S-1WR3	24	42/4	72/76	220	

Note: \* The capacitive loads of positive and negative outputs are identical.

### Input Specifications

Item	Operating Conditions	Min.	Typ.	Max.	Unit
Input Current (full load/no-load)	5V input	--	250/14	282/--	mA
	12V input	--	106/10	116/--	
	15V input	--	90/10	100/--	
	24V input	--	60/12	63/--	
Surge Voltage (1sec. max.)	5V input	-0.7	--	9	VDC
	12V input	-0.7	--	18	
	15V input	-0.7	--	21	
	24V input	-0.7	--	30	
Reflected Ripple Current*		--	200	--	mA
Input Filter		Capacitance filter			
Hot Plug		Unavailable			

Note: \* Refer to DC-DC Converter Application notes for detailed description of reflected ripple current test method.

### Output Specifications

Item	Operating Conditions	Min.	Typ.	Max.	Unit	
Output Voltage Accuracy		See output regulation curve(Fig. 1)				
Linear Regulation	Input voltage change: ±1%	3.3V output	--	--	1.5	--
		Other output	--	--	1.2	
Load Regulation	10%-100% load	3.3V/5V output	--	--	20	%
		Other output	--	--	15	
Ripple & Noise*	20MHz bandwidth	3.3V output	--	100	150	mVp-p
		Other output	--	80	120	
Temperature Coefficient	100% full load	--	±0.02	--	%/°C	
Output Short Circuit Protection		Continuous, self-recovery				

Note: \*The "parallel cable" method is used for Ripple and Noise test, please refer to DC-DC Converter Application Notes for specific information.

### General Specifications

Item	Operating Conditions	Min.	Typ.	Max.	Unit
Isolation	Input-output, with the test time of 1 minute, the leakage current < 1mA	5000	--	--	VAC
		6000	--	--	VDC
Patient Leakage Current*	250VAC, 50/60Hz	--	--	2	µA
Insulation Resistance	Input-output, isolation voltage 500VDC	1000	--	--	MΩ
Isolation Capacitance	Input-output, 100kHz/0.1V	--	4	--	pF
Operating Temperature	Derating when operating temperature ≥ 85°C (see Fig. 2)	-40	--	105	°C

Storage Temperature		-55	--	125	°C
Case Temperature Rise	Ta=25°C	--	25	--	
Pin Soldering Resistance Temperature	Soldering spot is 1.5mm away from case for 10 seconds	--	--	300	
Storage Humidity	Non-condensing	Wave soldering, 10 seconds	255	260	265
			5	--	95
Switching Frequency	5V input, 100% load	--	300	--	kHz
	12/15/24V input, 100% load	--	200	--	
MTBF	MIL-HDBK-217F@25°C	19360	--	--	k hours
Creepage & Clearance Distance		5	--	--	mm

Note: \* Leakage current and reinforced insulation is based on 250 VAC, 50/60 Hz system input voltage.

**Mechanical Specifications**

Case Material	Black plastic; flame-retardant and heat-resistant (UL94V-0)
Dimensions	19.50 x 9.80 x 12.50 mm
Weight	4.0g (Typ.)
Cooling Method	Free air convection

**Electromagnetic Compatibility (EMC)**

Emissions	CE	H0515S-1WR3 H0524S-1WR3 G0515S-1WR3 G2424S-1WR3	CISPR32/EN55032 CLASS A (see Fig. 4 for recommended circuit) EN60601-1-2/CISPR 11 GROUP1 CLASS A (see Fig. 4 for recommended circuit)
		Other Part No.	CISPR32/EN55032 CLASS B (see Fig. 4 for recommended circuit) EN60601-1-2/CISPR 11 GROUP1 CLASS B (see Fig. 4 for recommended circuit)
	RE	H0515S-1WR3 H0524S-1WR3 G0515S-1WR3 G2424S-1WR3	CISPR32/EN55032 CLASS A (see Fig. 4 for recommended circuit) EN60601-1-2/CISPR 11 GROUP1 CLASS A (see Fig. 4 for recommended circuit)
		Other Part No.	CISPR32/EN55032 CLASS B (see Fig. 4 for recommended circuit) EN60601-1-2/CISPR 11 GROUP1 CLASS B (see Fig. 4 for recommended circuit)
Immunity	ESD	EN60601-1-2 (IEC/EN61000-4-2) Air ±15kV, Contact ±8kV perf. Criteria B	

**Typical Characteristic Curves**

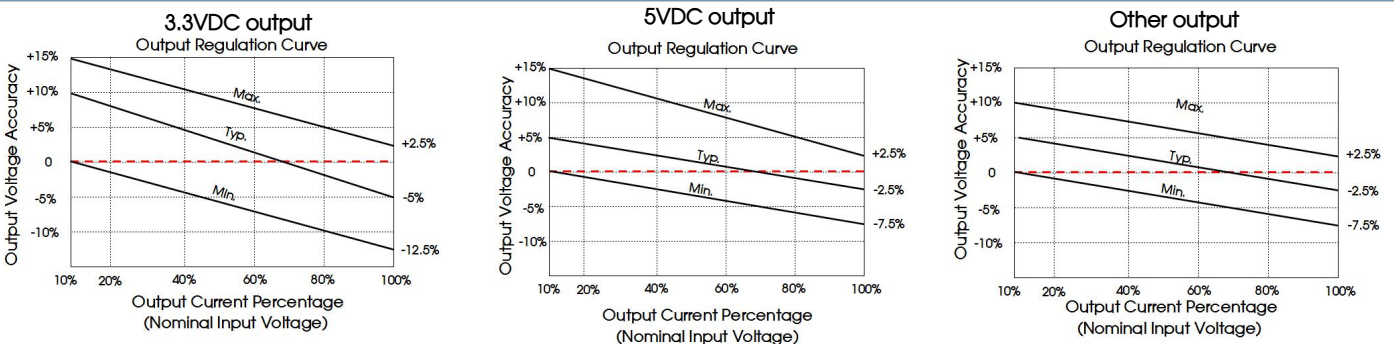


Fig. 1

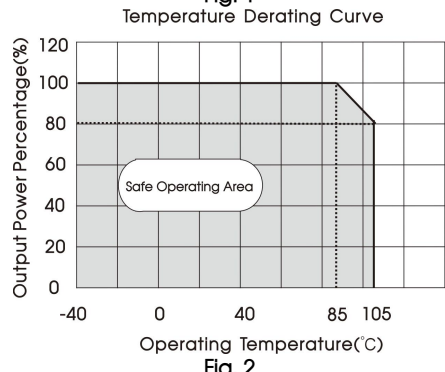


Fig. 2

Design Reference

1. Typical application

If it is required to further reduce input and output ripple, a filter capacitor can be connected to the input and output terminals, see Fig.3. Moreover, choosing suitable filter capacitor is very important, start-up problems may be caused by too large capacitance. To ensure the modules running well, the recommended capacitive load values as shown in Table 1.

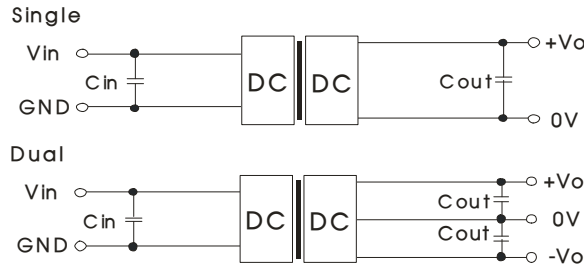


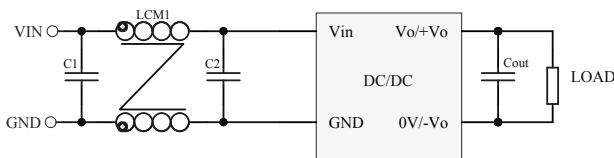
Fig. 3

Table 1: Recommended input and output capacitor values

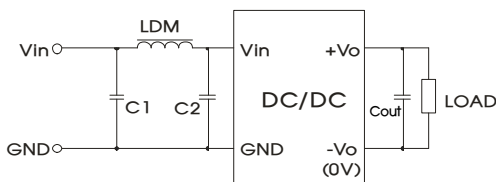
Vin	Cin	Single Vout	Cout	Dual Vout	Cout
5VDC	10μF/10V	3.3/5VDC	10μF/16V	±3.3VDC	4.7μF/16V
12VDC	10μF/25V	9VDC	10μF/16V	±5/±9VDC	4.7μF/16V
15VDC	1μF/25V	12VDC	2.2μF/25V	±12/±15VDC	1μF/25V
24VDC	2.2μF/50V	15VDC	1μF/25V	±24VDC	0.47μF/50V
--	--	24VDC	0.47μF/50V	--	--

2. EMC (CLASS B) compliance circuit

H05\_S-1WR3/G05\_S-1WR3/G2424S-1WR3 (CLASS A)



H12\_S-1WR3/G12\_S-1WR3/G15\_S-1WR3 (CLASS B)  
(except G1203S-1WR3/G1224S-1WR3)



H24\_S-1WR3/G24\_S-1WR3/G1203S-1WR3/G1224S-1WR3(CLASS B)  
(except G2424S-1WR3)

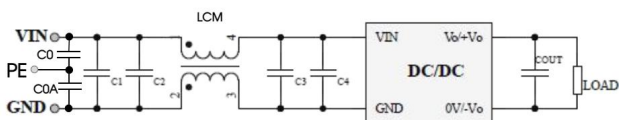


图 4

EMC recommended circuit value table (Table 2)

Series	H05_S-1WR3	G05_S-1WR3	G2424S-1WR3
EMI	C1/C2	4.7μF /50V	22μF /16V
	Cout	Refer to the Cout in table 1	
	LCM1	22μH (Nickel zinc inductance)	
		FL2D-Z5-140	

Series	H12_S-1WR3	G12_S-1WR3	G15_S-1WR3
EMI	C1/C2	4.7μF /25V	
	Cout	Refer to the Cout in table 1	
	LDM	22μH (Nickel zinc inductance)	

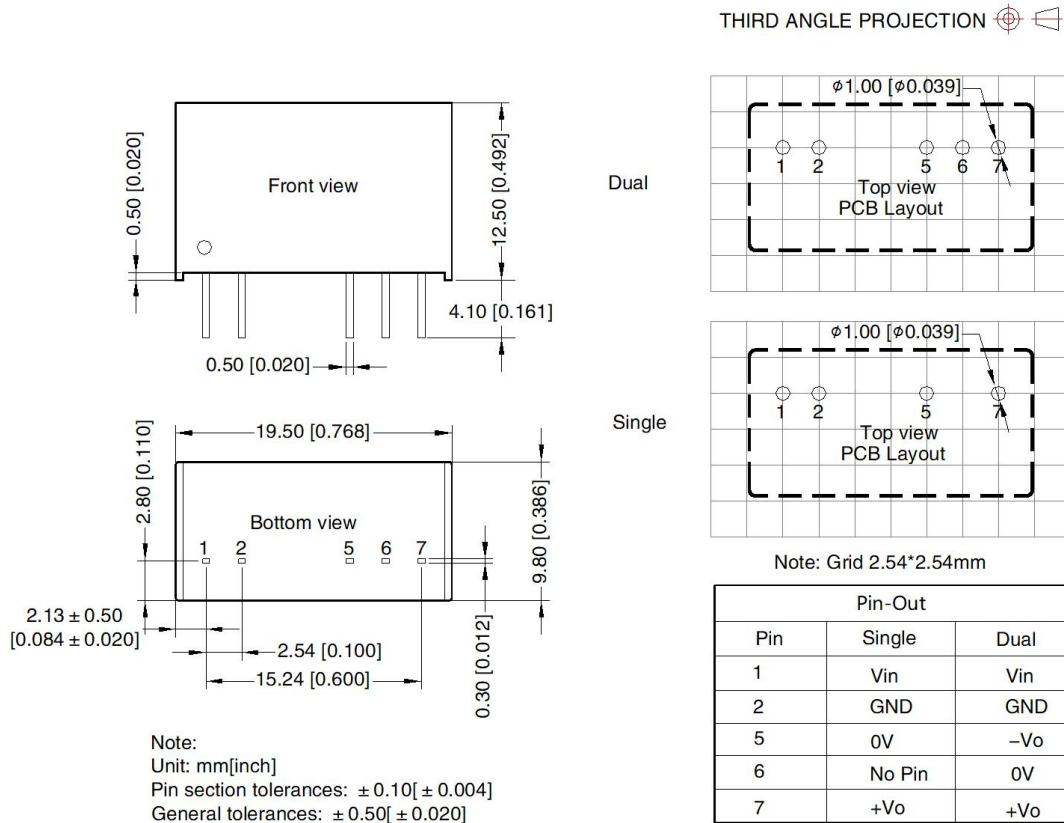
Series	H24_S-1WR3	G24_S-1WR3 (except G2403S-1WR3)	G2403_S-1WR3	G1203_S-1WR3	G1224S-1WR3
EMI	C0/C0A	--	--	4.7μF /16V	4.7μF /16V
	C1/C2	4.7μF /50V	4.7μF /50V	4.7μF /16V	4.7μF /50V
	C3	--	100μF /50V	--	--
	C4	4.7μF /50V	--	4.7μF /16V	4.7μF /16V
	COUT	Refer to the Cout in table 1			
LCM	22μH (Nickel zinc inductance)		FL2D-Z5-140		

### 3. Minimum Output Load Requirement

For a reliable and efficient operation of the converter, the minimum load should never be less than 10% of the rated output load. If the total required output power is below 10%, a parallel bleeding resistor is required on the output, ensuring that the sum of the power consumption is always maintained at 10% minimum.

4. For additional information, please refer to DC-DC converter application notes on [www.mornsun-power.com](http://www.mornsun-power.com)

## Dimensions and Recommended Layout



- Note:
- For additional information on Product Packaging please refer to [www.mornsun-power.com](http://www.mornsun-power.com). Packaging bag number: 58200013;
  - If the product is not operated within the required load range, the product performance cannot be guaranteed to comply with all parameters in the datasheet;
  - The maximum capacitive load offered were tested at input voltage range and full load;
  - Unless otherwise specified, parameters in this datasheet were measured under the conditions of T<sub>a</sub>=25°C, humidity<75%RH with nominal input voltage and rated output load;
  - All index testing methods in this datasheet are based on our company corporate standards;
  - We can provide product customization service, please contact our technicians directly for specific information;
  - Products are related to laws and regulations: see "Features" and "EMC";
  - Our products shall be classified according to ISO14001 and related environmental laws and regulations, and shall be handled by qualified units.

## Mornsun Guangzhou Science & Technology Co., Ltd.

Address: No. 8 Nanyun 4th Road, Huangpu District, Guangzhou, China  
Tel: 86-20-38601850

Fax: 86-20-38601272

E-mail: [info@mornsun.cn](mailto:info@mornsun.cn)

[www.mornsun-power.com](http://www.mornsun-power.com)