

EMC Filter



RoHS

This model applies to analog circuit which is noise-sensitive. Put FI-B03D on to the input of module can ensure EMI performance by a big margin.

FEATURES

- Compact size
- Restrain line disturb of DC power source
- The attenuation coefficient of frequency meet 20dB
- Cost-effective
- Low Temperature Rise
- Mounting: PCB mounting, chassis mounting with screw terminals, DIN-Rail mounting

Selection Guide

Model	Input Voltage Range (VDC)	Nominal Current (A)(max)
FI-B03D	0~80	3.0

Note: series with suffix "A2S" are chassis mounting, with suffix "A4S" are DIN-Rail mounting, for example FI-B03DA4S.

General Specifications

Item	Test Conditions	Min.	Typ.	Max.	Unit
Operating Temperature		-40	--	85	°C
Storage Temperature		-55	--	125	
Storage Humidity		5	--	95	%
Casing Temperature Rise	Nominal Current	--	--	40	°C
Withstand Voltage to GND		--	--	1500	VDC
D-C-R	Input - Output	--	30	--	mΩ

General Specifications

Casing Material	Aluminum Alloy				
Package Dimensions	Horizontal package	25.40x25.40x11.70 mm			
	A2S wiring package	76.00x31.50x21.20 mm			
	A4S rail package	76.00x31.50x25.80 mm			
Weight	Horizontal package/A2S wiring package/A4S rail package				15g/35g/55g(Typ)

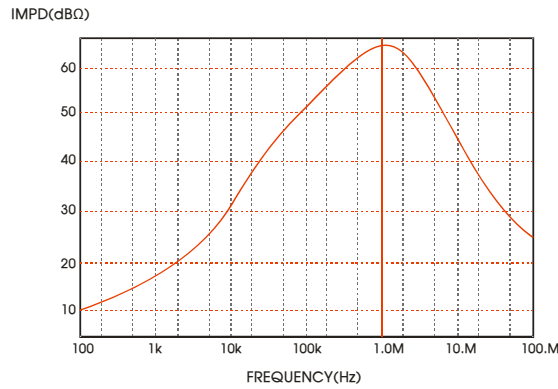
Frequency Impedance Specifications

Item	Test Conditions	Min.	Typ.	Max.	Unit
Im	150KHz~100 MHz	--	20	--	dBΩ

Devise Standard

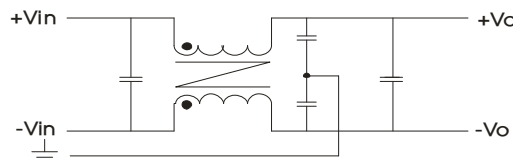
FI-B03D can ensure MORNSUN DC/DC converter module with 3A input current EMI meet EN 55022 Class B.

Impedance Specifications

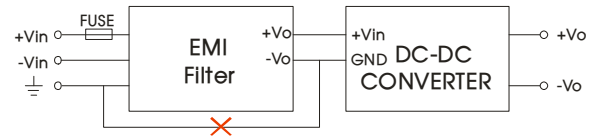
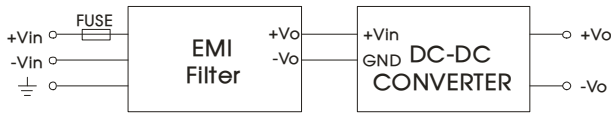


Design Reference

1. Inside schematic



2. Typical application

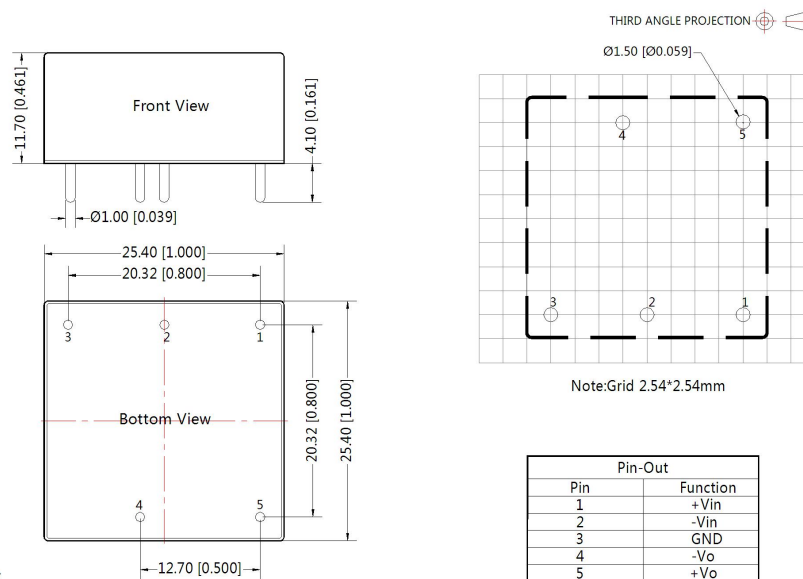


FUSE: Due to the difference of the power module input current, the fuse of the recommended values, please refer to the Technical Manual for the power module.

Note: This application is not supported for this series.

3. For more information Please find the application notes on www.mornsun-power.com

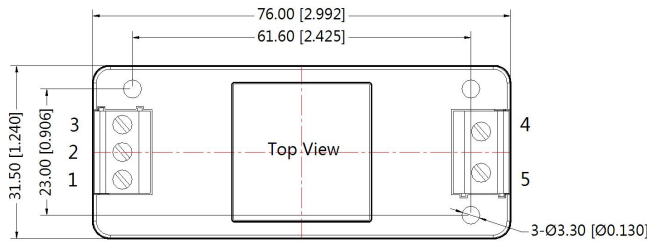
FI-B03D Dimensions and Recommended Layout



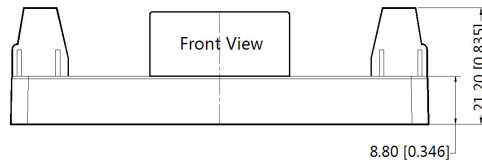
Note:
Unit :mm[inch]
Pin diameter tolerances :±0.10[±0.004]
Pin height tolerances :±0.50[±0.020]
General tolerances:±0.25[±0.010]

FI-B03DA2S Dimensions

THIRD ANGLE PROJECTION 



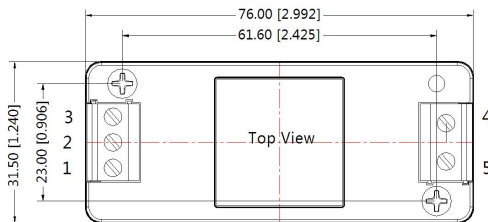
Pin-Out	
Pin	Function
1	+Vin
2	-Vin
3	⊥
4	-Vo
5	+Vo



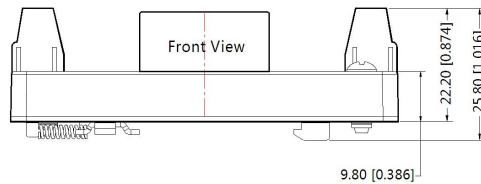
Note:
Unit:mm[inch]
Wire range:24~12 AWG
General tolerances:±0.50[±0.020]

FI-B03DA4S Dimensions

THIRD ANGLE PROJECTION 



Pin-Out	
Pin	Function
1	+Vin
2	-Vin
3	GND
4	-Vo
5	+Vo



Note:
Unit:mm[inch]
Wire range:24~12 AWG
General tolerances:±0.50[±0.020]

Note:

1. Packing Information please refer to 'Product Packing Information'. The Packing bag number of Horizontal package : 58220003, the Packing bag number of A2S/ A4S package:58220022;
2. Unless otherwise specified, data in this data sheet should be tested under the conditions of Ta=25°C, humidity<75%;
3. All index testing methods in this datasheet are based on our Company's corporate standards;
4. The performance indexes of the product models listed in this manual are as above, but some indexes of non-standard model products will exceed the above-mentioned requirements, and please directly contact our technicians for specific information;
5. We can provide product customization service;
6. Specifications of this product are subject to changes without prior notice.

MORNSUN Guangzhou Science & Technology Co., Ltd.

Address: No. 5, Kehui St. 1, Kehui Development Center, Science Ave., Guangzhou Science City, Luogang District, Guangzhou, P. R. China
Tel: 86-20-38601850-8801 Fax: 86-20-38601272 E-mail: info@mornsun.cn