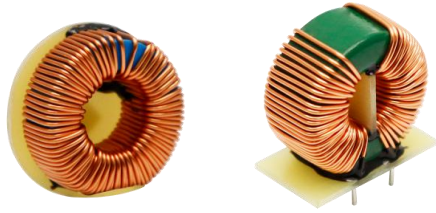


### Common Mode Filter

### FEATURES



- High reliability
- Excellent isolation voltage
- Effective anti-interference
- Good temperature characteristic (-40°C~+105°C)

RoHS



The filter is suitable for applications that are sensitive to noise, such as analog circuits, and the EMC level can be significantly improved by adding a product to the input end of the power module.

### Selection Guide

Model	Inductance (mH)(min)	Inductance (mH)(typ)	Current (A)(max)	DCR(mΩ)(max)	Weight (g)(typ)	Size(mm)(L x W x H)
FD2D-20-301	195	300	2	160	22	28.00 x 28.00 x 13.50 See Figure1
FD2D-20-202	1300	2000	2	400	53	32.00 x 32.00 x 18.50 See Figure2
FL2D-20-562	3640*2	5600*2	2	60*2	10	21.00 x 11.00 x 20.50 See Figure3
FL2D-20-103	6500*2	10000*2	2	70*2	16.5	23.00 x 14.00 x 23.00 See Figure4

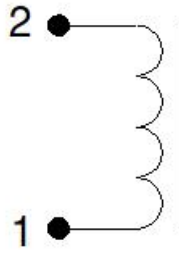
### General Specifications

Item	Test Conditions	Min.	Typ.	Max.	Unit
Operating Temperature *		-40	--	+105	°C
Storage Temperature		-40	--	+105	
Storage Humidity	Non-condensing	--	--	95	%
Inductance Error Range	fo=10KHz, Uo=0.1V,T=25°C	--	35	--	%
Isolation Voltage (COIL-COIL)	FL2D-20-562 FL2D-20-103	Electric strength test for 1 minute with a leakage current of 1mA max		3000	VDC
Vibration		10~55Hz, 10g, X,Y,Z direction ,2mm			
Warranty	Ambient temperature: <40°C	3 years			

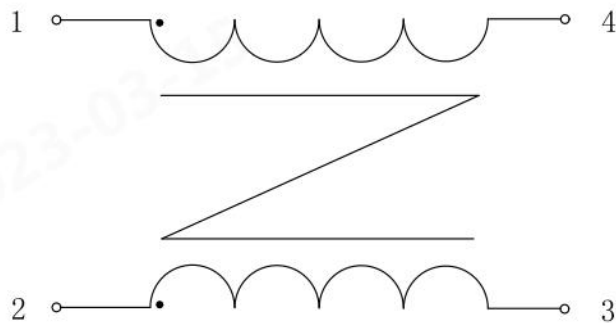
Note: \*1.Operating Temperature range includes inductor self heating.

2.The dispensing advice added fixed when using this product.

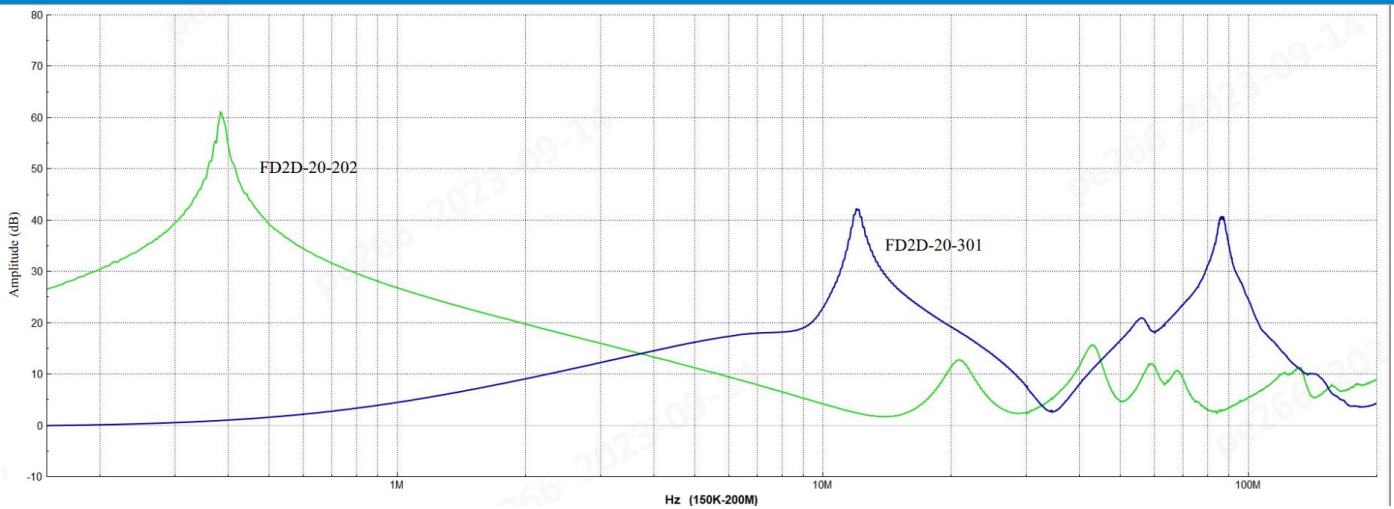
FD2D-20-xxx Schematic Diagram Of Pin Mark



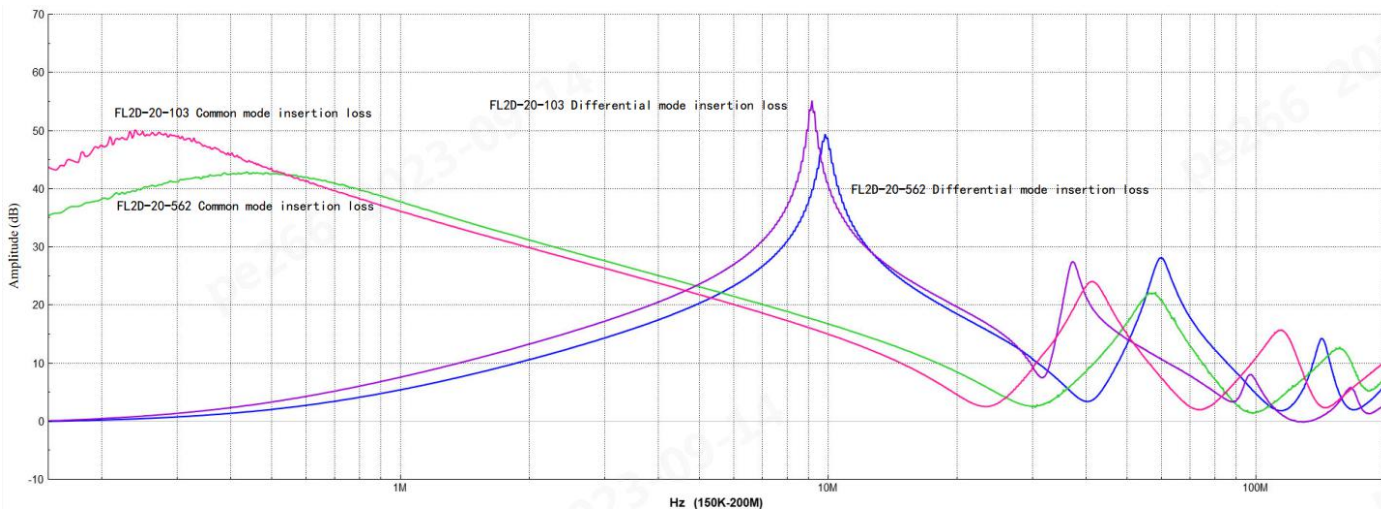
FL2D-20-xxx Schematic Diagram Of Pin Mark



FD2D-20-xxx Insertion Loss Specifications (reference value )



**FL2D-A0-xxx Insertion Loss Specifications (reference value)**



**FD2D-20-301 Schematic Diagram Of Pin Mark**

THIRD ANGLE PROJECTION

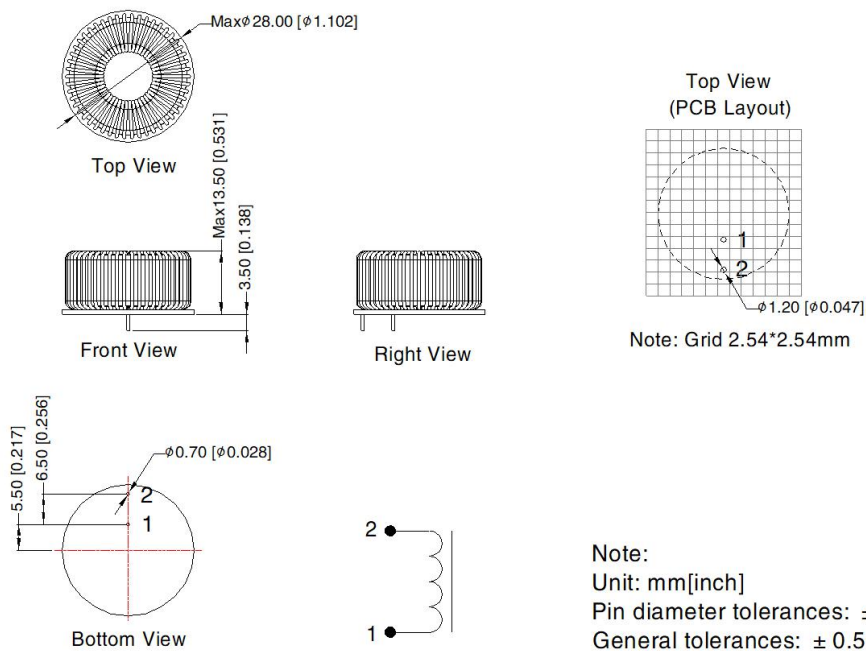


Fig. 1

FD2D-20-202 Schematic Diagram Of Pin Mark

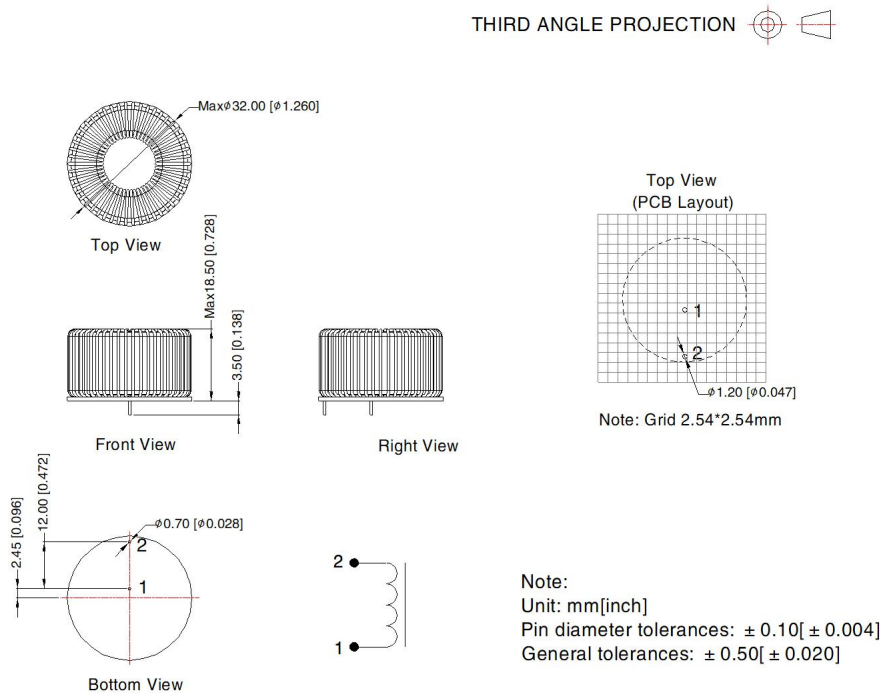


Fig. 2

FL2D-20-562 Schematic Diagram Of Pin Mark

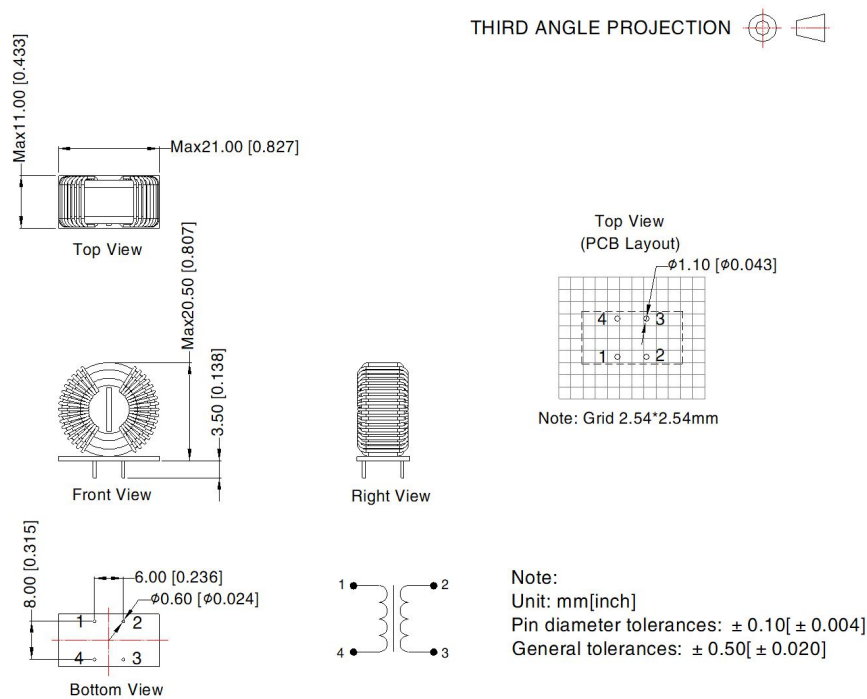


Fig. 3

FL2D-20-103 Schematic Diagram Of Pin Mark

THIRD ANGLE PROJECTION 

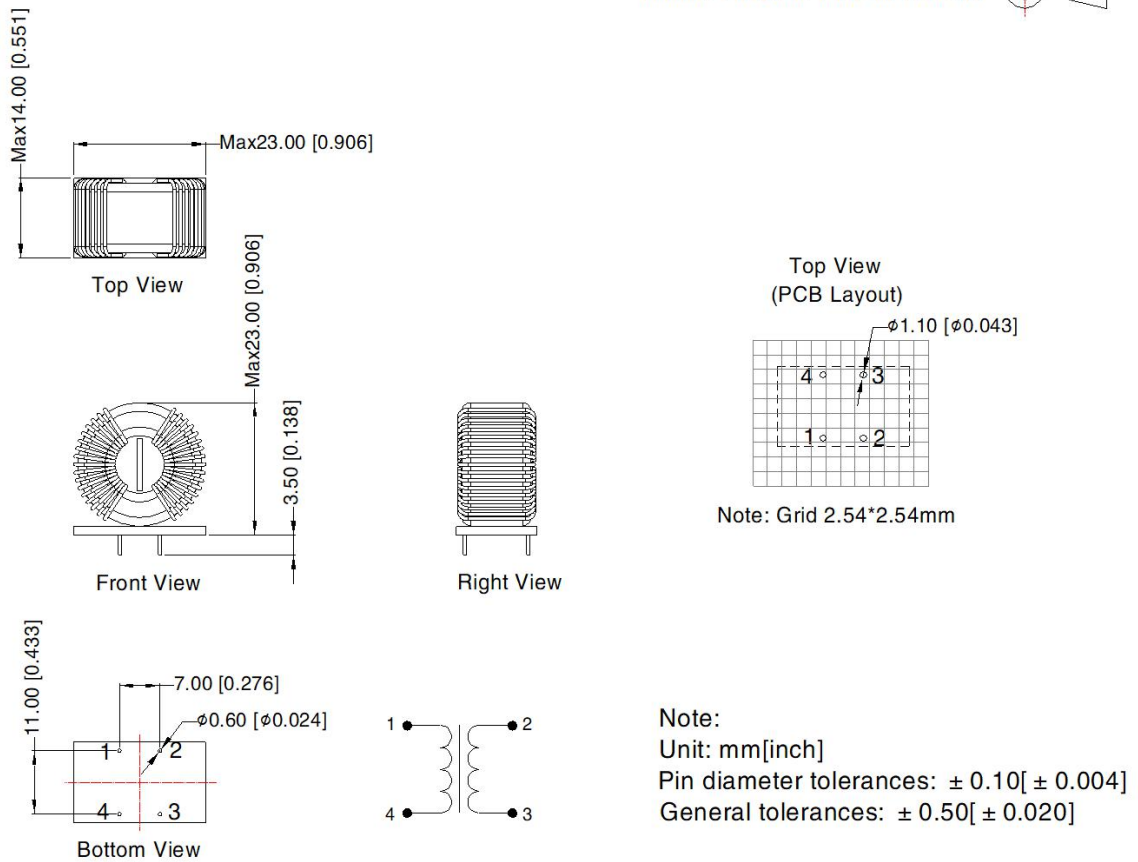


Fig. 4

Note:

1. For additional information on Product Packaging please refer to [www.mornsun-power.com](http://www.mornsun-power.com). Packaging bag number: 58210365 (FD2D-20-301) ; 58240100 (FD2D-20-202) ; 58220605 (FL2D-20-562、FL2D-20-103)
2. Unless otherwise specified, data in this data sheet should be tested under the conditions of Ta=25°C, humidity<75%RH;
3. All index testing methods in this datasheet are based on company corporate standards;
4. The performance indexes of the product models listed in this manual are as above, but some indexes of non-standard model products will exceed the above-mentioned requirements, and please directly contact our technicians for specific information;
5. We can provide product customization service, please contact our technicians directly for specific information;
6. Products are related to laws and regulations: see "Features" ;
7. Our products shall be classified according to ISO14001 and related environmental laws and regulations, and shall be handled by qualified units.

Mornsun Guangzhou Science & Technology Co., Ltd.

Address: No. 5, Kehui St. 1, Kehui Development Center, Science Ave., Guangzhou Science City, Huangpu District, Guangzhou, P. R. China

Tel: 86-20-38601850

Fax: 86-20-38601272

E-mail: [info@mornsun.cn](mailto:info@mornsun.cn)

[www.mornsun-power.com](http://www.mornsun-power.com)